

# TE TAUMATA *POLL HEREFORDS*

Established 1962

## **32nd ANNUAL SALE**

On Account of McWILLIAM STUD STOCK, TE TAUMATA, MASTERTON



**THURSDAY 9th JUNE 2011 AT 1.00pm**

TO BE HELD UNDER COVER ON THE PROPERTY, 150 TE KOPI ROAD, GLADSTONE



*Please join us for lunch after the sale*

Auctioneers

The logo for PGG Wrightson, featuring the company name in white text on a dark, rounded rectangular background.

**PGG Wrightson**

Supporting Firms: Elders Livestock, John Griffiths & Co, Craig Nelson, Ray Moss Livestock.

**6% commission is offered to non-participating companies.**

# FOREWORD

Welcome to Te Taumata Poll Herefords' 32nd Annual Bull Sale.

We are pleased to offer a strong line of well-grown bulls bred for performance and profitability. Sires of sale bulls include Te Taumata Xanthian and Te Taumata Wickham and AI sires GHC Volume and Mohican Roughout. Our breeding programme is focused on the beef industry. We continue to select the most relevant genetics for the cattle breeder and finisher, looking for sires that will produce thick, fast-growing progeny with constitution, structure and maternal performance.

It has been another challenging year at Te Taumata, with an autumn drought in 2010, followed by a record-breaking wet winter. Spring was short and cold and then drought conditions started again in late November. The resilience and ability of Te Taumata genetics to bounce back has stood out after 4 consecutive years of drought and record-breaking adverse conditions. All stock (50% cattle: 50% sheep) were farmed through the droughts without destocking, with a high district stocking rate and number of young growing stock. The strong performance of the livestock under these conditions has reinforced our breeding programme objectives.

Herefords are a cornerstone of the beef industry in New Zealand. Herefords cows are scientifically proven to be the most feed efficient British beef breed; this means they will produce more with less feed required. This also helps to make Herefords more resilient in drought and adverse conditions. Hereford and Hereford cross cows will last longer in your herd, Hereford bulls will complete more breeding seasons and are easy to handle. Prime Hereford and Hereford cross carcasses are eligible for premiums through our rapidly growing Hereford Prime branded beef programme. We encourage you to support the Hereford Prime



Alistair and Jim McWilliam

branded beef programme. Taylor Preston is producing a fantastic Hereford or Hereford-cross product with demand outstripping supply. The combinations of feed efficiency, longevity in the herd and branded beef premiums means more money in your pocket.

We encourage inspection prior to sale day and are more than happy to recommend bulls that will best suit your particular farm conditions. It is important to us that we provide all of our clients with hard-working bulls, profitable genetics, and good advice. This is the basis for developing strong, long-term relationships with our clients.

Please ring for further information and check out our website at **[www.tetaumata.co.nz](http://www.tetaumata.co.nz)**.

We look forward to seeing you on June 9th.

### **Jim and Alistair McWilliam**

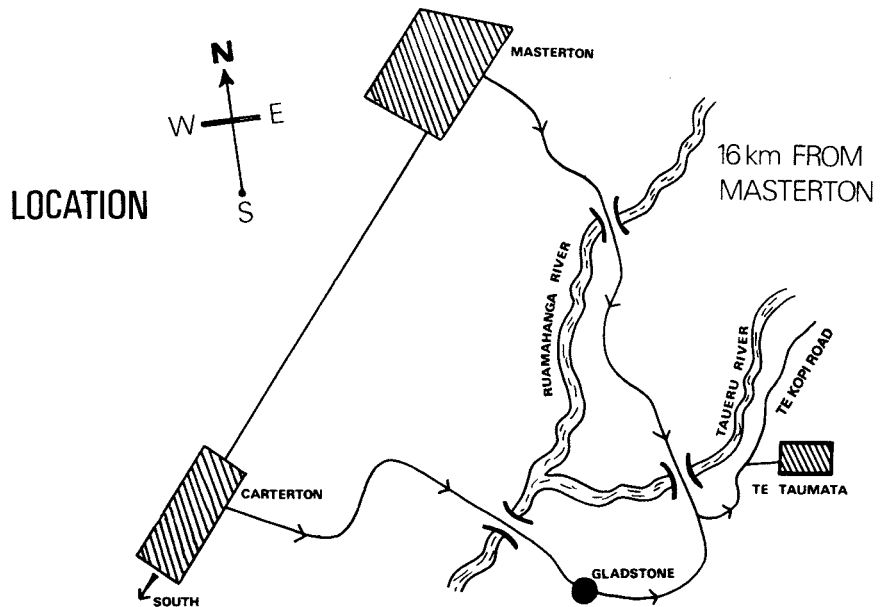
Alistair Home: 06 372 7861  
Cell: 027 455 0099

Jim Home: 06 372 7718  
Cell: 027 625 4320

Email: [studstock@tetaumata.co.nz](mailto:studstock@tetaumata.co.nz)



Eileen, Kayla, Ella and Alistair at Beef Expo May 2010.  
Baby Jessica not pictured.



150 Te Kōpi Road, Gladstone

## GENERAL INFORMATION

1. TB status C10 and brucellosis free
2. All bulls semen and service tested by Tararua Breeding Centre
3. All bulls ultrasound scanned for carcase traits
4. All bulls vaccinated twice for BVD and born to females vaccinated for BVD
5. All bulls reared on their own mothers and stand on sound feet
6. All cattle recorded with the New Zealand Hereford Association
7. FREE DELIVERY: within the North Island
8. Delivery will be organised by 17 June 2011



Ella with her champion pet calf Little Lizzie

## 2011 AVERAGE HEREFORD GROUP BREEDPLAN EBVs

2011 NZ HEREFORD GROUP BREEDPLAN EBV AVERAGES FOR 2009 BORN CALVES												BREED OBJECT INDEX AVG.		
GEST	BW	MILK	200W	400W	600W	SS	CWT	EMA	RIB FAT	RUMP FAT	RBY	HEREFORD PRIME	EXPORT MATERNAL	DAIRY MATERNAL
-0.1	+4.53	+12	+26	+42	+60	+1.3	+36	+2.3	+0.1	+0.1	+0.7	+45	+42	+33

**Please bring this catalogue to the Sale**

# Understanding GROUP BREEDPLAN EBVs

## WHAT ARE EBVS USED FOR?

Use Estimated Breeding Values (EBVs) as a **tool** to help you select a bull for its breeding strengths relative to your needs. However, **don't select on figures alone** – there are many important traits that have no EBVs!

GROUP EBVs can be used to compare animals on performance from one Hereford herd to another in New Zealand and Australia. EBVs are calculated within breed Trans-Tasman. **You cannot compare animals on EBVs from one breed to another.**

**ESTIMATED BREEDING VALUES (EBVS)** – An animal's breeding value is its genetic merit, half of which will be passed on to its progeny. While we will never know the exact breeding value, for performance traits it is possible to make good estimates. These are called Estimated Breeding Values (EBVs). They are expressed as the difference between an individual animal's genetics and the genetic base to which the animal is compared.

## GROWTH AND MILK EBVS

**BWT** – Birth Weight EBV (kg) is based on the measured birth weight of animals, adjusted for dam age. The lower the value the lighter the calf at birth and the lower the likelihood of a difficult birth. This is particularly important when selecting sires for use over heifers.

**MILK** – Milk EBV (kg) is an estimate of an animal's milking ability. For sires, this EBV indicates the effect of the daughter's milking ability, inherited from the sire, on the 200-day weights of her calves. For dams, it indicates her own milk ability.

**200** – 200-Day Growth EBV (kg) is calculated from the weight of animals taken between 80 and 300 days of age. Values are adjusted to 200 days and for dam age. This EBV is the best single estimate of an animal's genetic merit for growth to early ages.

**400** – 400-Day Weight EBV (kg) is calculated from the weight of progeny taken between 301 and 500 days of age, adjusted to 400 days and for dam age. This EBV is the best single estimate of an animal's genetic merit for yearling weight.

**600** – 600-Day Growth EBV (kg) is calculated from the weight of progeny taken between 501 and 900 days of age, adjusted to 600 days and for dam age.

This EBV is the best single estimate of an animal's genetic merit for growth beyond yearling age.

### **CARCASE EBVS**

**EMA** – Eye Muscle Area EBV (cm<sup>2</sup>) estimates genetic differences in eye muscle area at the 12/13th rib site of a 300kg dressed carcass. More positive EBVs indicate better muscling on animals. Sires with relatively higher EMA EBVs are expected to produce better muscled and higher percentage yielding progeny at the same carcass weight than will sires with lower EMA EBVs.

**RIB and RUMP** - Rib Fat and Rump Fat EBVs (mm) estimate the genetic differences in the fat depth at the 12/13th rib and P8 sites respectively, adjusted to a standard 300kg carcass. More positive EBVs indicate more subcutaneous fat on the carcass.

**RBV%** – Retail Beef Yield Percent EBV (%) represents total (boned out) meat yield as a percentage of a 300kg dressed carcass. A more positive EBV indicates higher percentage yield for the 300kg carcass size.

**IMF %** – Intra-muscular Fat Percent EBV (%) is an estimate of the genetic difference in the percentage of intra-muscular fat at the 12/13<sup>th</sup> rib site in a 300kg carcass. Depending on target markets, larger more positive values are generally more favourable.

### **ACCURACY**

**ACC (%)** - is based on the amount of performance information available on the animal and its close relatives- particularly the number of progeny analysed. Accuracy is also based on the heritability of the trait and the genetic correlations with other recorded traits. Hence accuracy indicates the "confidence level" of the EBV. The higher the accuracy value the lower the likelihood of change in the animal's EBV as more information is analysed for that animal or it's relatives.

# Understanding Hereford Selection Indexes

New Zealand Hereford selection indexes are calculated for three market specifications, namely Export, Hereford Prime and Dairy. They relate to typical self-replacing Hereford herds in temperate New Zealand targeting these specifications.

Indexes are reported as an EBV, in units of relative earning capacity (\$'s) for a given market. They reflect both the short-term profit generated by a sire through the sale of his progeny, and the longer term profit generated by his daughters in a self-replacing cow herd.

Typical production parameters, price and costs underlie each Selection Index. Benefits and costs evaluated include both those for the sale animal from birth to slaughter and those for the sustainable cow herd.

**Hereford Prime / Maternal Index (\$)** - Estimates the genetic difference between animals in net profitability per cow joined for an example commercial herd (self replacing herd run in a temperate environment) targeting grass finished steers for the Hereford Prime program. Steers are assumed marketed at 275kg carcass weight by 18 months of age.

**Export / Maternal Index (\$)** - Estimates the genetic difference between animals in net profitability per cow joined for an example commercial herd (self replacing herd run in a temperate environment) targeting grass finished steers for the export trade. Steers are assumed marketed at 300kg carcass weight by 20 months of age.

**Dairy / Maternal Index (\$)** - Estimates the genetic differences between animals in net profitability per cow joined for an example commercial herd producing readily marketable crossbred steers at 475kg by 16 months. Also included is a component for the breeding of Hereford Friesian cross heifers particularly sought after for beef cows.

Note that \$ Index Values for individual animals are sensitive to the assumptions used in the BreedObject analysis to calculate the selection index. For more information on these assumptions and weightings go to [www.herefords.co.nz](http://www.herefords.co.nz)



# 2010 BEEF EXPO NATIONAL HEREFORD SHOW & SALE

## RESERVE CHAMPION



**TE TAUMATA YORKER 08175**

# 2011 BEEF EXPO NATIONAL HEREFORD SALE ENTRY LOT 33

## 2011 HEREFORD GROUP EBVS FOR 2009 BORN CALVES

**TE TAUMATA ATOM 09249**

**BORN: 21/08/09**

**HB No. 0308090249**

	CE	GL	BWT	MILK	200	400	600	SS	CWT	EMA	RIB	RUMP	RBY	IMF	Index Values		
EBV		+1.2	+5.5	+12	+34	+47	+71	+1.2	+44	+2.1	-0.4	-1.0	+1.1	-0.2	HP	EM	DM
ACC		73%	72%	48%	66%	66%	68%	68%	55%	43%	45%	49%	43%	38%	+\$43	+\$44	+\$21

4K KFF KAZZ (IMP USA) P  
 TE TAUMATA PRESTIGE P  
 TE TAUMATA MINERVA 35 P  
**SIRE:** TE TAUMATA THUNDER 03737 P  
 4K SURVIVOR (IMP USA) (BM) P  
 TE TAUMATA DIANA 180 (BM) P  
 TE TAUMATA DIANA 160 P  
  
 L1 DOMINO 95461 PURE HORNED  
 CL 1 DOMINO 888H 1ET (IMP USA) (ET) PURE HORNED  
 CL 1 DOMINETTE 178 PURE HORNED  
**DAM:** TE TAUMATA LEONORA 168 P  
 TE TAUMATA EMPEROR P  
 TE TAUMATA LEONORA 92 P  
 TE TAUMATA LEONORA 67 P



We are pleased to offer Te Taumata Atom for sale at the 2011 National Hereford Sale at the Beef Expo in Feilding on May 17th. He is an ideal beef industry bull.

# REFERENCE SIRE

## 2011 GROUP BREEDPLAN

### GHC VOLUME III ET 139S

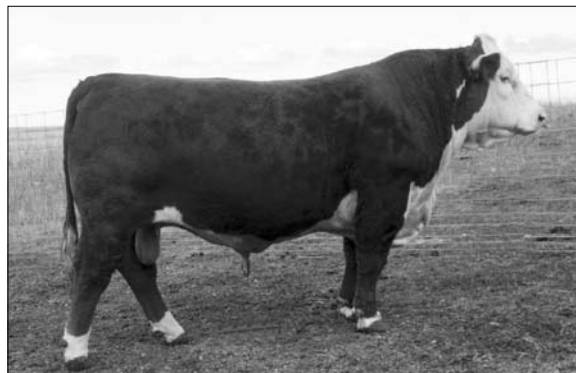
(IMP CAN) (ET)

BORN: 03/03/06

HB No. - CA02881594P

	CE	GL	BWT	MILK	200	400	600	SS	CWT	EMA	RIB	RUMP	RBY	IMF	Index Values		
EBV	+2.2	-2.2	+5.3	+11	+38	+66	+94	+2.2	+63	+4.5	-0.1	-0.9	+1.6	-0.1	HP	EM	DM
ACC	46%	83%	89%	72%	85%	85%	84%	81%	67%	56%	58%	57%	48%	50%	+\$68	+\$67	+\$48

SIRE: RU 20X BOULDER 57G (P)  
 REMITALL TEAMSTER 9T (P)  
 REMITALL KEYNOTE 20X (P)  
 REMITALL PATRICIA 99P (P)  
 RU 10A DEW 57D (P)  
 REMITALL ACME 10A (P)  
 RU 40L BUTTERCUP 57Z (P)  
 DAM: WALPOLE PHILLIS 13F (P)  
 GK FED EX 500Z (IMP USA) (BM) (P)  
 KLONDIKE 500Z FEDERATION 7C (IMP USA) (P)  
 GK SPIRIT QUEEN 42A  
 WALPOLE EXPRESSION 23B (P)  
 BAR AT MISS SUSAN 19D (P)  
 BAR AT CIRCLE SUSAN 15U (P)



Volume has sired thick, fast growing calves with tremendous muscling. Volume is a growth rate trait leader (denoted by shaded boxes above). We have kept an outstanding son of GHC Volume, Te Taumata Avalanche 09203, for use as an elite herd sire. We look forward to Volume daughters calving this coming season. We retain NZ semen rights.

# REFERENCE SIRE

## 2011 GROUP BREEDPLAN

### TE TAUMATA XANTHIAN

**0784**

**BORN: 10/08/07**

**HB No. - 0308070084P**

	CE	GL	BWT	MILK	200	400	600	SS	CWT	EMA	RIB	RUMP	RBY	IMF	Index Values		
EBV		+1.7	+6.1	+9	+39	+58	+75	+2.0	+46	+1.8	+0.0	-0.2	+0.6	-0.1	HP	EM	DM
ACC		74%	84%	56%	79%	78%	78%	77%	65%	52%	54%	58%	51%	48%	+\$44	+\$43	+\$23

GB L1 DOMINO 804 (J)  
 LH 804 DOM 9322 1ET (J)  
 SIRE: PDHR 9322 DOMINO 69G (IMP CAN) (J)  
 LH MS POWER 9134 (J)  
 MELSTAR STANDARD VOLT 3X (J)  
 PDHR MISS 3X STANDARD LASS 7B (J)  
 PDHR MISS STANDARD 39Y (J)  
 4K KFF KAZZ (IMP USA) (P)  
 TE TAUMATA PRESTIGE (P)  
 DAM: TE TAUMATA BELLE 236 (P)  
 TE TAUMATA MINERVA 35 (P)  
 TE TAUMATA EMPEROR (P)  
 TE TAUMATA BELLE 85 (P)  
 TE TAUMATA BELLE 61 (P)



Xanthian is a very sound free-moving bull that we have used for two seasons. We like his length and depth of body and tremendous constitution that he gives to his progeny. Pictured at 2.5 years of age.

# REFERENCE SIRE

## 2011 GROUP BREEDPLAN

### MOHICAN ROUGHOUT 428R

(IMP USA) (ET)

BORN: 22/03/05

HB No. - US42609423P

	CE	GL	BWT	MILK	200	400	600	SS	CWT	EMA	RIB	RUMP	RBY	IMF	Index Values		
EBV	-6.6	+1.7	+7.2	+14	+42	+61	+78	+2.2	+52	+3.9	-0.7	-1.9	+2.0	-0.1	HP	EM	DM
ACC	45%	81%	86%	73%	82%	83%	82%	81%	66%	57%	59%	58%	50%	52%	+\$42	+\$45	+\$8

SIRE: REMITALL OLYMPIAN ET 262L (P)  
 REMITALL CASINO 12C (P)  
 REMITALL GOVERNOR 236G (IMP CAN) (P)  
 REMITALL ZERMARVEL 111Z (IMP CAN) (P)  
 MM RSM STOCKMASTER 512 (IMP USA) (BM) (P)  
 REMITALL CATALINA 24H (P)  
 REMITALL CATALINA 139C (P)  
 REMITALL FOUNDATION 46F (P)  
 REMITALL JACK PLANE 90J (P)  
 REMITALL FELINE 24F (P)  
 DAM: REMITALL BELLE 92L (P)  
 MM RSM STOCKMASTER 512 (IMP USA) (BM) (P)  
 REMITALL JASMINE 74J (P)  
 PLAIN LAKE BELLE 20X 117P 5B (P)



**2011 Sale Bulls pictured in early April 2011**



# YOUNG HERD SIRE

## 2011 GROUP BREEDPLAN

### TE TAUMATA AVALANCHE 09203

BORN: 08/07/09

HB No. 0308090203

	CE	GL	BWT	MILK	200	400	600	SS	CWT	EMA	RIB	RUMP	RBV	IMF	Index Values		
EBV		-3.1	+5.1	+13	+39	+63	+90	+2.0	+60	+3.1	-0.1	-0.7	+1.2	-0.2	HP	EM	DM
ACC		74%	71%	52%	66%	65%	63%	50%	51%	37%	38%	39%	35%	34%	+\$63	+\$60	+\$40

REMITALL KEYNOTE 20X P  
 RU 20X BOULDER 57G P  
 RU 10A DEW 57D P  
**SIRE:** GHC VOLUME III ET 139S (IMP CAN) (ET) P  
 KLONDIKE 500Z FEDERATION 7C (IMP USA) P  
 WALPOLE PHILLIS 13F P  
 BAR AT MISS SUSAN 19D P  
  
 GK SPORTSMAN 41Y P  
 4K SURVIVOR (IMP USA) (BM) P  
**DAM:** TE TAUMATA LYNDA 49 (BM) P  
 GK MADAME EX 623B P  
 KOANUI BONUS M226 P  
 TE TAUMATA LYNDA 43 P  
 TE TAUMATA LYNDA 28 P



Avalanche is a tremendous son of GHC Volume that we've kept as an elite herd sire at Te Taumata. We like his growth, length and thickness. He's out of a very good, consistent producing 13 year old 4K Survivor cow. Pictured in Feb 2011 at 18 months old.

# YOUNG HERD SIRE

## 2011 GROUP BREEDPLAN

### TE TAUMATA ASPIN 09258

BORN: 28/08/09

HB No. 0308090258

	CE	GL	BWT	MILK	200	400	600	SS	CWT	EMA	RIB	RUMP	RBV	IMF	Index Values		
EBV			+4.5	+10	+29	+46	+63	+1.7	+39	+1.7	-0.3	-0.7	+0.8	-0.2	HP	EM	DM
ACC			70%	41%	64%	64%	62%	46%	50%	33%	34%	37%	33%	28%	+\$42	+\$43	+\$34

COOTHARABA ELGIN 2 PURE HORNED  
 HRT XCEL ET AI (IMP AUS) (ET) PURE HORNED  
 BRAMBLE KATHERINE M090 (AI) PURE HORNED  
**SIRE:** TE TAUMATA VIKING 05864 SCURRED  
 TE TAUMATA PRESTIGE P  
 TE TAUMATA WILLDALE 2 P  
 TE TAUMATA WILLDALE 196 P  
 4K KFF KAZZ (IMP USA) P  
 TE TAUMATA PREMIER P  
 TE TAUMATA BELLE 104 (SBM) P  
**DAM:** TE TAUMATA LEONORA 188-05867 P  
 4K SURVIVOR (IMP USA) (BM) P  
 TE TAUMATA LEONORA 123 P  
 TE TAUMATA LEONORA 87-837 P



Aspin is by a consistent old herd sire, Te Taumata Viking and out of a top quality Te Taumata Premier cow. We really like the big top and hindquarter of this bull and his balance and correctness. Pictured in May 2011 at 20 months old. Avalanche and Aspin are the young elite herd sires that will help to lead Te Taumata into the future.

## SALE BULL INDEX

Lot No.	Tag No.	Lot No.	Tag No.	Lot No.	Tag No.
1 .....	243	10 .....	219	19 .....	284
2 .....	202	11.....	254	20 .....	272
3 .....	213	12 .....	269	21 .....	229
4 .....	280	13 .....	226		
5 .....	216	14 .....	238		
6 .....	279	15 .....	233		
7 .....	235	16 .....	276		
8 .....	267	17 .....	220		
9 .....	263	18 .....	259		

# TE TAUMATA APOLLO 09243

## 2011 GROUP BREEDPLAN

### LOT 1

BORN: 16/08/09

HB No. 0308090243P

	BWT	MILK	200	400	600	SS	CWT	EMA	RIB	RUMP	RBY	
EBV	+4.9	+8	+32	+52	+71	+1.9	+45	+2.3	+0.1	-0.3	+1.0	
ACC	71%	42%	64%	64%	67%	67%	52%	40%	43%	47%	41%	
									Index Values			SCROTAL
									HP	EM	DM	39cm
									+\$45	+\$44	+\$25	

TE TAUMATA PREMIER (P)  
 TE TAUMATA SUPERSTAR (P)  
 TE TAUMATA BELLE 123 (GBM) (P)  
**SIRE:** TE TAUMATA WICKHAM 06983 (P)  
 4K SURVIVOR (IMP USA) (BM) (P)  
 TE TAUMATA BELLE 166 (P)  
 TE TAUMATA BELLE 61 (P)  
 REMITALL GOVERNOR 236G (IMP CAN) (P)  
 TE TAUMATA STETSON 02 (P)  
 TE TAUMATA LYDIA 70 (P)  
**DAM:** TE TAUMATA WILLDALE 296-04850 (P)  
 4K KFF KAZZ (IMP USA) (P)  
 TE TAUMATA WILLDALE 253 (BM) (P)  
 TE TAUMATA WILLDALE 208 (P)



Comments: 243 is a very dark, well marked bull with a balanced set of EBVs.

Purchaser .....

Price: .....

# TE TAUMATA XANTHIAN 09202

## 2011 GROUP BREEDPLAN

### LOT 2

BORN: 07/07/09

HB No. 0308090202P

	BWT	MILK	200	400	600	SS	CWT	EMA	RIB	RUMP	RBY	
EBV	+4.3	+9	+35	+54	+70	+1.4	+49	+2.4	-0.1	-0.4	+1.1	
ACC	72%	43%	66%	66%	69%	75%	54%	43%	45%	50%	43%	
									Index Values			SCROTAL
									HP	EM	DM	40cm
									+\$49	+\$48	+\$38	

LH 804 DOM 9322 1ET (J)

PDHR 9322 DOMINO 69G (IMP CAN) (J)

PDHR MISS 3X STANDARD LASS 7B (J)

**SIRE:** TE TAUMATA XANTHIAN 0784 (P)

TE TAUMATA PRESTIGE (P)

TE TAUMATA BELLE 236 (P)

TE TAUMATA BELLE 85 (P)

TE TAUMATA PREMIER (P)

TE TAUMATA SUPERSTAR (P)

TE TAUMATA BELLE 123 (GBM) (P)

**DAM:** TE TAUMATA WILLDALE 292-04831 (P)

4K SURVIVOR (IMP USA) (BM) (P)

TE TAUMATA WILLDALE 234 (P)

TE TAUMATA WILLDALE 177 (P)



Comments: 202 is a top stud bull prospect with tremendous spring of rib and depth of body. He wintered extremely well, a testament to the easy fleshing ability of the Xanthian and Superstar genetics. His dam is a lovely cow.

Purchaser .....

Price: .....

# TE TAUMATA ROUGHOUT 09213

2011 GROUP BREEDPLAN

## LOT 3

BORN: 19/07/09

HB No. 0308090213P

	BWT	MILK	200	400	600	SS	CWT	EMA	RIB	RUMP	RBY	
EBV	+7.5	+14	+48	+72	+100	+1.9	+66	+3.8	-0.9	-1.9	+2.0	
ACC	71%	47%	66%	66%	69%	75%	54%	44%	46%	49%	42%	
									Index Values			SCROTAL
									HP	EM	DM	42cm
									+\$60	+\$61	+\$23	

REMITALL GOVERNOR 236G (IMP CAN) (P)  
 REMITALL OLYMPIAN ET 262L (P)  
 REMITALL CATALINA 24H (P)  
**SIRE:** MOHICAN ROUGHOUT 428R (IMP USA) (ET) (P)  
 REMITALL JACK PLANE 90J (P)  
 REMITALL BELLE 92L (P)  
 REMITALL JASMINE 74J (P)  
 LH 804 DOM 9322 1ET (J)  
 PDHR 9322 DOMINO 69G (IMP CAN) (J)  
 PDHR MISS 3X STANDARD LASS 7B (J)  
**DAM:** TE TAUMATA LEONORA 206-0615 (P)  
 TE TAUMATA PREMIER (P)  
 TE TAUMATA LEONORA 173 (P)  
 TE TAUMATA LEONORA 128 (P)



Comments: 213 will be one of the biggest bulls in the catalogue when he's fully grown. Huge growth and EMA figures, typical of Roughout progeny. Top EMA scanning bull with a 100cm actual EMA.

Purchaser .....

Price: .....

# TE TAUMATA ACHILLES 09280

## 2011 GROUP BREEDPLAN

### LOT 4

BORN: 23/09/09

HB No. 0308090280P

	BWT	MILK	200	400	600	SS	CWT	EMA	RIB	RUMP	RBY	
EBV	+4.9	+13	+33	+45	+67	+2.2	+40	+1.2	-0.3	-0.6	+0.5	
ACC	72%	42%	66%	66%	69%	72%	54%	41%	44%	48%	42%	
									Index Values			SCROTAL
									HP	EM	DM	42cm
									+\$43	+\$43	+\$29	

COOTHARABA ELGIN 2 (J)

HRT XCEL ET AI (IMP AUS) (ET) (J)

BRAMBLE KATHERINE M090 (AI) (J)

SIRE: TE TAUMATA VIKING 05864 (S)

TE TAUMATA PRESTIGE (P)

TE TAUMATA WILLDALE 2 (P)

TE TAUMATA WILLDALE 196 (P)

4K KFF KAZZ (IMP USA) (P)

TE TAUMATA PREMIER (P)

TE TAUMATA BELLE 104 (SBM) (P)

DAM: TE TAUMATA LEONORA 173 (P)

4K SURVIVOR (IMP USA) (BM) (P)

TE TAUMATA LEONORA 128 (P)

TE TAUMATA LEONORA 85 (P)



Comments: 280 is a soft skinned bull out of a very good Te Taumata Premier cow 03727. Balanced set of EBVs.

Purchaser .....

Price: .....

# TE TAUMATA VOLUME 09216

## 2011 GROUP BREEDPLAN

### LOT 5

BORN: 20/07/09

HB No. 0308090216P

	BWT	MILK	200	400	600	SS	CWT	EMA	RIB	RUMP	RBY	
EBV	+5.6	+10	+32	+52	+72	+1.1	+45	+3.2	+0.1	-0.2	+0.8	
ACC	72%	49%	67%	67%	70%	75%	55%	44%	46%	49%	42%	
									Index Values			SCROTAL
									HP	EM	DM	40cm
									+\$46	+\$44	+\$22	

REMITALL KEYNOTE 20X (P)

RU 20X BOULDER 57G (P)

RU 10A DEW 57D (P)

SIRE: GHC VOLUME III ET 139S (IMP CAN) (ET) (P)

KLONDIKE 500Z FEDERATION 7C (IMP USA) (P)

WALPOLE PHILLIS 13F (P)

BAR AT MISS SUSAN 19D (P)

REMITALL JONATHON 73J (P)

GLENLEES 73J BOLD ET 300M (IMP CAN) (ET) (P)

TPH 131D REAL EDGE 60G (P)

DAM: TE TAUMATA WILLDALE 291-04798 (P)

TE TAUMATA JILT (P)

TE TAUMATA WILLDALE 218 (P)

TE TAUMATA WILLDALE 180 (P)



Comments: 216 is a thick-topped bull, typical of the muscling seen in Volume progeny.

Purchaser .....

Price: .....

# TE TAUMATA XANTHIAN 09279

## 2011 GROUP BREEDPLAN

### LOT 6

BORN: 11/09/09

HB No. 0308090279P

	BWT	MILK	200	400	600	SS	CWT	EMA	RIB	RUMP	RBY	
EBV	+5.5	+8	+37	+60	+80	+2.1	+51	+2.2	-0.2	-0.5	+1.0	
ACC	71%	43%	65%	65%	68%	73%	54%	42%	45%	49%	43%	
									Index Values			SCROTAL
									HP	EM	DM	42cm
									+\$55	+\$53	+\$42	

LH 804 DOM 9322 1ET (J)

PDHR 9322 DOMINO 69G (IMP CAN) (J)

PDHR MISS 3X STANDARD LASS 7B (J)

**SIRE:** TE TAUMATA XANTHIAN 0784 (P)

TE TAUMATA PRESTIGE (P)

TE TAUMATA BELLE 236 (P)

TE TAUMATA BELLE 85 (P)

4K KFF KAZZ (IMP USA) (P)

TE TAUMATA PREMIER (P)

TE TAUMATA BELLE 104 (SBM) (P)

**DAM:** TE TAUMATA BELLE 272-05939 (P)

TE TAUMATA KING Q992 (P)

TE TAUMATA BELLE 168 (P)

TE TAUMATA BELLE 72 (P)



Comments: 279 is a long-bodied, nicely balanced bull out of our strong constitution sire Te Taumata Xanthian.

Purchaser .....

Price: .....

# TE TAUMATA ATLAS 09235

## 2011 GROUP BREEDPLAN

### LOT 7

BORN: 06/08/09

HB No. 0308090235P

	BWT	MILK	200	400	600	SS	CWT	EMA	RIB	RUMP	RBY	
EBV	+7.7	+14	+42	+59	+84	+1.6	+51	+2.7	-0.4	-1.1	+1.4	
ACC	72%	53%	67%	67%	70%	76%	56%	46%	49%	52%	45%	
									Index Values			SCROTAL
									HP	EM	DM	40cm
									+\$38	+\$40	-\$8	

- REMITALL OLYMPIAN ET 262L (P)
- REMITALL GOVERNOR 236G (IMP CAN) (P)
- SIRE: MOHICAN ROUGHOUT 428R (IMP USA) (ET) (P)
- REMITALL CATALINA 24H (P)
- REMITALL BELLE 92L (P)
- REMITALL JACK PLANE 90J (P)
- REMITALL JASMINE 74J (P)
- GK SPORTSMAN 41Y (P)
- 4K SURVIVOR (IMP USA) (BM) (P)
- GK MADAME EX 623B (P)
- DAM: TE TAUMATA LYNDA 47 (P)
- TE TAUMATA EMPEROR (P)
- TE TAUMATA LYNDA 31 (P)
- TE TAUMATA LYNDA 13 (P)

Purchaser .....

Price: .....

# TE TAUMATA XANTHIAN 09267

2011 GROUP BREEDPLAN

## LOT 8

BORN: 04/09/09

HB No. 0308090267H

	BWT	MILK	200	400	600	SS	CWT	EMA	RIB	RUMP	RBY	
EBV	+6.3	+12	+36	+58	+83	+2.0	+52	+2.1	-0.4	-0.8	+1.2	
ACC	71%	46%	65%	66%	69%	75%	55%	45%	47%	51%	46%	
									Index Values			SCROTAL
									HP	EM	DM	41cm
									+\$49	+\$50	+\$21	

LH 804 DOM 9322 1ET (J)

PDHR 9322 DOMINO 69G (IMP CAN) (J)

PDHR MISS 3X STANDARD LASS 7B (J)

SIRE: TE TAUMATA XANTHIAN 0784 (P)

TE TAUMATA PRESTIGE (P)

TE TAUMATA BELLE 236 (P)

TE TAUMATA BELLE 85 (P)

LRD 300C EXTRA 57U SIC (J)

YARRAM EXTRA 57U M629 ET1 AI (IMP AUS) (BM) (J)

YARRAM THRUSH 31 ET1 (J)

DAM: TE TAUMATA LEONORA152 (P)

4K SURVIVOR (IMP USA) (BM) (P)

TE TAUMATA LEONORA 124 (BM) (P)

TE TAUMATA LEONORA 92 (P)

Purchaser .....

Price: .....

# TE TAUMATA XANTHIAN 09263

## 2011 GROUP BREEDPLAN

### LOT 9

BORN: 30/08/09

HB No. 0308090263P

	BWT	MILK	200	400	600	SS	CWT	EMA	RIB	RUMP	RBY	
EBV	+5.4	+7	+33	+49	+66	+1.1	+42	+2.2	-0.2	-0.4	+0.9	
ACC	72%	49%	66%	66%	69%	75%	55%	45%	47%	51%	45%	
									Index Values			SCROTAL
									HP	EM	DM	39cm
									+\$35	+\$36	+\$9	

LH 804 DOM 9322 1ET (J)

PDHR 9322 DOMINO 69G (IMP CAN) (J)

PDHR MISS 3X STANDARD LASS 7B (J)

**SIRE:** TE TAUMATA XANTHIAN 0784 (P)

TE TAUMATA PRESTIGE (P)

TE TAUMATA BELLE 236 (P)

TE TAUMATA BELLE 85 (P)

GK SPORTSMAN 41Y (P)

4K SURVIVOR (IMP USA) (BM) (P)

GK MADAME EX 623B (P)

**DAM:** TE TAUMATA WILLDALE 232 (P)

TE TAUMATA EMPEROR (P)

TE TAUMATA WILLDALE 159 (P)

TE TAUMATA WILLDALE 61 (P)



Purchaser .....

Price: .....

# TE TAUMATA VOLUME 09219

## 2011 GROUP BREEDPLAN

### LOT 10

BORN: 25/07/09

HB No. 0308090219P

	BWT	MILK	200	400	600	SS	CWT	EMA	RIB	RUMP	RBY		
EBV	+5.4	+10	+37	+57	+85	+2.0	+56	+3.2	-0.2	-0.7	+1.2		
ACC	72%	45%	66%	67%	70%	75%	54%	43%	46%	49%	42%		
										Index Values		SCROTAL	
										HP	EM	DM	42cm
										+\$59	+\$58	+\$39	

REMITALL KEYNOTE 20X (P)

RU 20X BOULDER 57G (P)

RU 10A DEW 57D (P)

SIRE: GHC VOLUME III ET 139S (IMP CAN) (ET) (P)

KLONDIKE 500Z FEDERATION 7C (IMP USA) (P)

WALPOLE PHILLIS 13F (P)

BAR AT MISS SUSAN 19D (P)

GLENLEES 73J BOLD ET 300M (IMP CAN) (ET) (P)

TE TAUMATA UPROAR 04787 (P)

TE TAUMATA LYNDA55 (P)

DAM: TE TAUMATA BELLE 284-0622 (S)

4K SURVIVOR (IMP USA) (BM) (P)

TE TAUMATA BELLE 178 (BM) (P)

TE TAUMATA BELLE 123 (GBM) (P)



Purchaser .....

Price: .....

# TE TAUMATA VOLUME 09254

## 2011 GROUP BREEDPLAN

### LOT 11

BORN: 20/08/09

HB No. 0308090254P

	BWT	MILK	200	400	600	SS	CWT	EMA	RIB	RUMP	RBV		
EBV	+5.6	+12	+39	+59	+85	+1.2	+53	+2.8	-0.4	-1.0	+1.3		
ACC	72%	51%	67%	68%	70%	76%	56%	45%	48%	51%	44%		
										Index Values		SCROTAL	
										HP	EM	DM	40cm
										+\$55	+\$55	+\$33	

REMITALL KEYNOTE 20X (P)

RU 20X BOULDER 57G (P)

RU 10A DEW 57D (P)

SIRE: GHC VOLUME III ET 139S (IMP CAN) (ET) (P)

KLONDIKE 500Z FEDERATION 7C (IMP USA) (P)

WALPOLE PHILLIS 13F (P)

BAR AT MISS SUSAN 19D (P)

MONREID QUIRK Q003 (J)

SMITHSTON TAM O'SHANTER ET2 AI (IMP AUS) (J)

GLANMONNOW OLIVE 21 AI (J)

DAM: TE TAUMATA BELLE 214 (P)

TE TAUMATA EMPEROR (P)

TE TAUMATA BELLE 104 (SBM) (P)

TE TAUMATA BELLE 65 (P)



Purchaser .....

Price: .....

# TE TAUMATA XENON 09269

## 2011 GROUP BREEDPLAN

### LOT 12

BORN: 03/09/09

HB No. 0308090269P

	BWT	MILK	200	400	600	SS	CWT	EMA	RIB	RUMP	RBY	
EBV	+3.3	+7	+34	+52	+68	+1.4	+51	+3.4	+0.0	-0.1	+1.4	
ACC	69%	41%	64%	64%	68%	74%	53%	42%	45%	49%	43%	
									Index Values			SCROTAL
									HP	EM	DM	40cm
									+\$50	+\$48	+\$33	

GH DIFFERENCE BRITISHER 45L (J)

GH NEON 17N (IMP CAN) (J)

GH SIR SIMBA LASS 107K (J)

**SIRE:** TE TAUMATA XENON 0779 (P)

TE TAUMATA NIMROD T285 (P)

TE TAUMATA LEONORA156 (P)

TE TAUMATA LEONORA 114 (P)

TE TAUMATA PREMIER (P)

TE TAUMATA SUPERSTAR (P)

TE TAUMATA BELLE 123 (GBM) (P)

**DAM:** TE TAUMATA LEONORA 207-0619 (P)

4K SURVIVOR (IMP USA) (BM) (P)

TE TAUMATA LEONORA 128 (P)

TE TAUMATA LEONORA 85 (P)



Purchaser .....

Price: .....

# TE TAUMATA ROUGHOUT 09226

2011 GROUP BREEDPLAN

## LOT 13

BORN: 03/08/09

HB No. 0308090226P

	BWT	MILK	200	400	600	SS	CWT	EMA	RIB	RUMP	RBY	
EBV	+5.8	+10	+40	+62	+88	+2.7	+59	+3.5	-0.8	-1.7	+2.0	
ACC	70%	47%	65%	66%	69%	75%	54%	43%	46%	49%	42%	
									Index Values			SCROTAL
									HP	EM	DM	42cm
									+\$58	+\$60	+\$35	

REMITALL GOVERNOR 236G (IMP CAN) (P)  
 REMITALL OLYMPIAN ET 262L (P)  
 REMITALL CATALINA 24H (P)  
**SIRE:** MOHICAN ROUGHOUT 428R (IMP USA) (ET) (P)  
 REMITALL JACK PLANE 90J (P)  
 REMITALL BELLE 92L (P)  
 REMITALL JASMINE 74J (P)  
 TE TAUMATA PREMIER (P)  
 TE TAUMATA SUPERSTAR (P)  
 TE TAUMATA BELLE 123 (GBM) (P)  
**DAM:** TE TAUMATA LYNDA 65-06955 (P)  
 4K SURVIVOR (IMP USA) (BM) (P)  
 TE TAUMATA LYNDA 49 (BM) (P)  
 TE TAUMATA LYNDA 43 (P)



Purchaser .....

Price: .....

# TE TAUMATA VOLUME 09238

2011 GROUP BREEDPLAN

## LOT 14

BORN: 12/08/09

HB No. 0308090238P

	BWT	MILK	200	400	600	SS	CWT	EMA	RIB	RUMP	RBY	
EBV	+5.2	+7	+40	+62	+89	+2.0	+60	+3.6	-0.2	-0.9	+1.7	
ACC	72%	47%	66%	67%	70%	75%	55%	44%	46%	49%	43%	
									Index Values			SCROTAL
									HP	EM	DM	41cm
									+\$63	+\$63	+\$47	

REMITALL KEYNOTE 20X (P)

RU 20X BOULDER 57G (P)

RU 10A DEW 57D (P)

SIRE: GHC VOLUME III ET 139S (IMP CAN) (ET) (P)

KLONDIKE 500Z FEDERATION 7C (IMP USA) (P)

WALPOLE PHILLIS 13F (P)

BAR AT MISS SUSAN 19D (P)

TE TAUMATA PREMIER (P)

TE TAUMATA SUPERSTAR (P)

TE TAUMATA BELLE 123 (GBM) (P)

DAM: TE TAUMATA CYNTHIA 90-06987 (P)

4K SURVIVOR (IMP USA) (BM) (P)

TE TAUMATA CYNTHIA 78 (P)

TE TAUMATA CYNTHIA 67 (P)

Purchaser .....

Price: .....

# TE TAUMATA ROUGHOUT 09233

2011 GROUP BREEDPLAN

## LOT 15

BORN: 07/08/09

HB No. 0308090233P

	BWT	MILK	200	400	600	SS	CWT	EMA	RIB	RUMP	RBY	
EBV	+6.3	+9	+40	+60	+79	+1.8	+53	+3.5	-0.2	-0.8	+1.8	
ACC	71%	47%	66%	66%	69%	75%	55%	44%	46%	50%	43%	
									Index Values			SCROTAL
									HP	EM	DM	40cm
									+\$47	+\$49	+\$19	

REMITALL GOVERNOR 236G (IMP CAN) (P)  
 REMITALL OLYMPIAN ET 262L (P)  
 REMITALL CATALINA 24H (P)  
**SIRE:** MOHICAN ROUGHOUT 428R (IMP USA) (ET) (P)  
 REMITALL JACK PLANE 90J (P)  
 REMITALL BELLE 92L (P)  
 REMITALL JASMINE 74J (P)  
 TE TAUMATA PREMIER (P)  
 TE TAUMATA SUPERSTAR (P)  
 TE TAUMATA BELLE 123 (GBM) (P)  
**DAM:** TE TAUMATA WILLDALE 306-06946 (P)  
 4K SURVIVOR (IMP USA) (BM) (P)  
 TE TAUMATA WILLDALE 232 (P)  
 TE TAUMATA WILLDALE 159 (P)



Purchaser .....

Price: .....

# TE TAUMATA WICKHAM 09276

## 2011 GROUP BREEDPLAN

### LOT 16

BORN: 10/09/09

HB No. 0308090276P

	BWT	MILK	200	400	600	SS	CWT	EMA	RIB	RUMP	RBY	
EBV	+3.2	+10	+30	+44	+58	+2.0	+40	+2.2	+0.2	-0.3	+1.1	
ACC	71%	46%	65%	65%	68%	73%	53%	41%	44%	48%	42%	
									Index Values			SCROTAL
									HP	EM	DM	40cm
									+\$47	+\$45	+\$41	

TE TAUMATA PREMIER (P)

TE TAUMATA SUPERSTAR (P)

TE TAUMATA BELLE 123 (GBM) (P)

SIRE: TE TAUMATA WICKHAM 06983 (P)

4K SURVIVOR (IMP USA) (BM) (P)

TE TAUMATA BELLE 166 (P)

TE TAUMATA BELLE 61 (P)

FELTONS 517 (IMP USA) (P)

GERBER GRANGER 113G (IMP USA) (P)

GK QUEEN TEN 782R (P)

DAM: TE TAUMATA LEONORA151 (P)

KLONDIKE 707B 15D (IMP USA) (P)

TE TAUMATA LEONORA 116 (P)

TE TAUMATA LEONORA 99 (P)

Purchaser .....

Price: .....

# TE TAUMATA VOLUME 09220

## 2011 GROUP BREEDPLAN

### LOT 17

BORN: 20/07/09

HB No. 0308090220P

	BWT	MILK	200	400	600	SS	CWT	EMA	RIB	RUMP	RBV	
EBV	+4.0	+8	+31	+53	+70	+1.9	+48	+3.8	-0.4	-1.1	+1.7	
ACC	71%	47%	66%	67%	69%	75%	55%	43%	46%	49%	42%	
									Index Values			SCROTAL
									HP	EM	DM	39cm
									+\$50	+\$51	+\$37	

REMITALL KEYNOTE 20X (P)

RU 20X BOULDER 57G (P)

RU 10A DEW 57D (P)

SIRE: GHC VOLUME III ET 139S (IMP CAN) (ET) (P)

KLONDIKE 500Z FEDERATION 7C (IMP USA) (P)

WALPOLE PHILLIS 13F (P)

BAR AT MISS SUSAN 19D (P)

TE TAUMATA PREMIER (P)

TE TAUMATA SUPERSTAR (P)

TE TAUMATA BELLE 123 (GBM) (P)

DAM: TE TAUMATA BELLE 286-0639 (P)

S7R 832W CONTACT ET 451E (IMP USA) (BM) (P)

TE TAUMATA BELLE 151 (P)

TE TAUMATA BELLE 85 (P)



Purchaser .....

Price: .....

# TE TAUMATA XENON 09259

## 2011 GROUP BREEDPLAN

### LOT 18

BORN: 28/08/09

HB No. 0308090259P

	BWT	MILK	200	400	600	SS	CWT	EMA	RIB	RUMP	RBY	
EBV	+3.9	+8	+28	+46	+56	+1.5	+40	+3.9	+1.0	+1.5	+0.6	
ACC	68%	40%	63%	64%	67%	74%	52%	42%	44%	48%	42%	
									Index Values			SCROTAL
									HP	EM	DM	38cm
									+\$46	+\$38	+\$27	

GH DIFFERENCE BRITISHER 45L (J)

GH NEON 17N (IMP CAN) (J)

GH SIR SIMBA LASS 107K (J)

SIRE: TE TAUMATA XENON 0779 (P)

TE TAUMATA NIMROD T285 (P)

TE TAUMATA LEONORA156 (P)

TE TAUMATA LEONORA 114 (P)

REMITALL JONATHON 73J (P)

GLENLEES 73J BOLD ET 300M (IMP CAN) (ET) (P)

TPH 131D REAL EDGE 60G (P)

DAM: TE TAUMATA ROSE 5-06961 (P)

TE TAUMATA PRESTIGE (P)

TE TAUMATA ROSE 2 (P)

ROSELAWN CYNTHIA 539 (P)

Purchaser .....

Price: .....

# TE TAUMATA XANTHIAN 09284

2011 GROUP BREEDPLAN

## LOT 19

BORN: 28/08/09

HB No. 0308090284P

	BWT	MILK	200	400	600	SS	CWT	EMA	RIB	RUMP	RBY	
EBV	+4.8	+7	+24	+38	+46	+1.8	+25	+2.0	+0.5	+0.4	+0.7	
ACC	71%	42%	65%	65%	69%	74%	54%	41%	44%	48%	42%	
									Index Values			SCROTAL
									HP	EM	DM	40cm
									+\$27	+\$27	+\$11	

LH 804 DOM 9322 1ET (J)

PDHR 9322 DOMINO 69G (IMP CAN) (J)

PDHR MISS 3X STANDARD LASS 7B (J)

SIRE: TE TAUMATA XANTHIAN 0784 (P)

TE TAUMATA PRESTIGE (P)

TE TAUMATA BELLE 236 (P)

TE TAUMATA BELLE 85 (P)

BOYD COW MAKER 0112 (IMP USA) (P)

TE TAUMATA SABRE 0261 (P)

TE TAUMATA LEONORA 92 (P)

DAM: TE TAUMATA LYDIA 87-05933 (P)

GK SPECTRUM 823B (IMP USA) (P)

TE TAUMATA LYDIA 70 (P)

TE TAUMATA LYDIA 67 (P)

Purchaser .....

Price: .....

# TE TAUMATA UPROAR 09272

## 2011 GROUP BREEDPLAN

### LOT 20

**BORN: 05/09/09**

**HB No. 0308090272P**

	BWT	MILK	200	400	600	SS	CWT	EMA	RIB	RUMP	RBY	
EBV	+2.9	+7	+25	+34	+44	+0.3	+28	+0.6	+0.4	+0.5	-0.1	
ACC	73%	46%	67%	68%	70%	74%	56%	44%	47%	51%	45%	
									Index Values			SCROTAL
									HP	EM	DM	38cm
									+\$32	+\$30	+\$34	

REMITALL JONATHON 73J (P)

GLENLEES 73J BOLD ET 300M (IMP CAN) (ET) (P)

TPH 131D REAL EDGE 60G (P)

**SIRE:** TE TAUMATA UPROAR 04787 (P)

TE TAUMATA NOBLEMAN T296 (P)

TE TAUMATA LYNDA55 (P)

TE TAUMATA LYNDA 28 (P)

4K KFF KAZZ (IMP USA) (P)

TE TAUMATA PREMIER (P)

TE TAUMATA BELLE 104 (SBM) (P)

**DAM:** TE TAUMATA BELLE 231 (P)

4K SURVIVOR (IMP USA) (BM) (P)

TE TAUMATA BELLE 167 (BM) (P)

TE TAUMATA BELLE 100 (P)

Purchaser .....

Price: .....

# TE TAUMATA ROUGHOUT 09229

2011 GROUP BREEDPLAN

## LOT 21

BORN: 07/08/09

HB No. 0308090229P

	BWT	MILK	200	400	600	SS	CWT	EMA	RIB	RUMP	RBY	
EBV	+5.5	+12	+33	+48	+65	+1.4	+42	+2.5	+0.0	-0.6	+1.2	
ACC	72%	53%	67%	67%	70%	76%	56%	47%	49%	52%	46%	
									Index Values			SCROTAL
									HP	EM	DM	38cm
									+\$38	+\$40	+\$15	

REMITALL GOVERNOR 236G (IMP CAN) (P)  
 REMITALL OLYMPIAN ET 262L (P)  
 REMITALL CATALINA 24H (P)  
**SIRE:** MOHICAN ROUGHOUT 428R (IMP USA) (ET) (P)  
 REMITALL JACK PLANE 90J (P)  
 REMITALL BELLE 92L (P)  
 REMITALL JASMINE 74J (P)  
 GK SPORTSMAN 41Y (P)  
 4K SURVIVOR (IMP USA) (BM) (P)  
 GK MADAME EX 623B (P)  
**DAM:** TE TAUMATA LEONORA 120 (P)  
 MAGADOR SCULPTOR 46R \* (P)  
 TE TAUMATA LEONORA 67 (P)  
 TE TAUMATA LEONORA 38 (P)



Purchaser .....

Price: .....

# NOTES

*Please join us for refreshments in the woolshed at the conclusion of the sale.*



CONSISTENCY &  
UNRIVALLED QUALITY  
GUARANTEED

Talk to us about premiums paid to Hereford Prime beef suppliers



New Zealand

HEREFORD PRIME

**B E E F**

[WWW.HEREFORDPRIME.CO.NZ](http://WWW.HEREFORDPRIME.CO.NZ)

**NORTH ISLAND PROCUREMENT:**

**MAGILLS MEATS:**

David Whelan

P. 07 829 7926

M. 0274 784 941

**KEN WILSON MEATS:**

CR Grace Ltd, Greg Parkes Head Buyer

P. 06 212 4414

M. 021 276 9772

## **CONDITIONS OF SALE**

1. The sale will be conducted under the usual terms and conditions of the Wairarapa Stock and Station Agent's Association.
2. Each lot shall become the property of the purchaser at the fall of the hammer. Purchasers are advised to insure cattle prior to transit and for six months.
3. All bulls will be delivered by 17th June 2011.
4. Although all care has been taken in compiling this catalogue, no responsibility will be taken for any errors or omissions thereof. All lots are open for inspection prior to the commencement of the sale; the same are sold with all faults, if any. No compensation shall be made in respect of any fault or error of description of any lots; however, the vendor reserves the right to make compensation to a buyer if it is the vendor's wish.
5. Fertility guarantee. As per rules and regulations set down by The New Zealand Hereford Association.
6. Transfers by arrangement. All bulls eligible for transfer.
7. All persons who attend the Sale do so at their own risk. McWilliam Stud Stock assume no liability, legal or otherwise, for any accidents which may occur.

# PURCHASER'S DELIVERY INSTRUCTION SHEET 2011

(No verbal instructions can be accepted)

NOTE: This slip signed by the purchaser must be completed and given to the Sale Office when signing purchaser's invoice.

NAME: .....TELEPHONE No. (    ) .....

DELIVERY ADDRESS: .....

.....LOTS PURCHASED: .....

CONSIGN TO: .....TOTAL No. PURCHASED.....

ACCOUNT TO: .....

PURCHASER EMAIL ADDRESS:.....

INSURE FOR (State Period):.....Months.....

IS LOSS OF USE REQUIRED - Accident - Yes/No

**DELIVERY:** FREE within the North Island by 17th June 2011

Signature of Buyer: .....Please Print Name:.....

**piv . t**  
DESIGN  
[www.pivotdesign.co.nz](http://www.pivotdesign.co.nz)